

Projectors

**RAY**

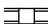















**TARGETTI**

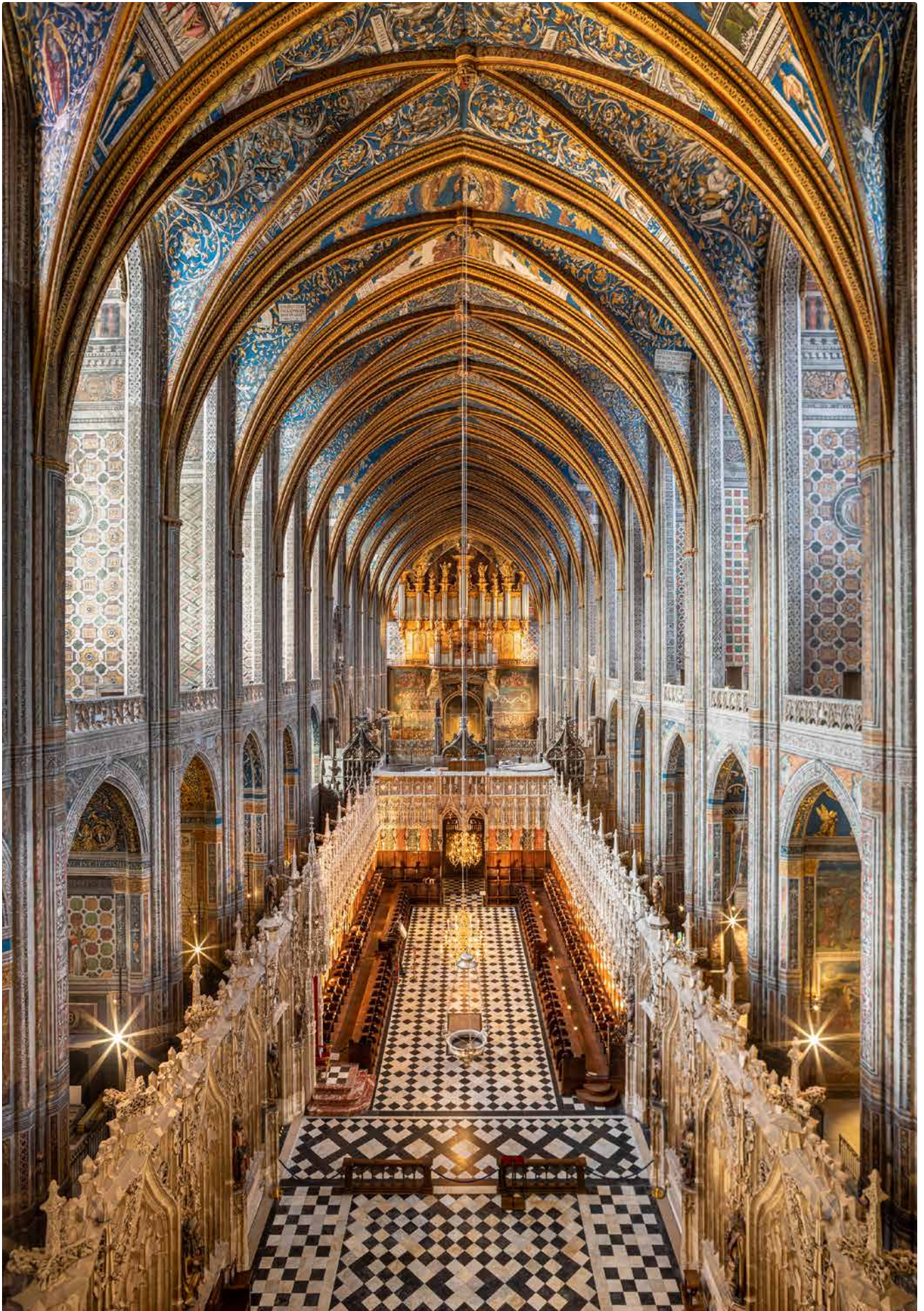


With an essential design and excellent performance, the Ray range now has a completely renewed range of optical systems to provide innovative solutions for different application contexts, especially where the quality of the lighting effect is a priority. The range is available in two different sizes and different powers.

# RAY

						
Track	Accent	Soft controlled	Zoom	Dynamic Beam Shaping (DBS)	3000K	4000K
INSTALLATION		LIGHT		COLOUR TEMPERATURE		
						
On-Off	Dali	Casambi	220-240V	White	Black	Easy Custom Colours
CONTROL		POWER SUPPLY		FINISH		







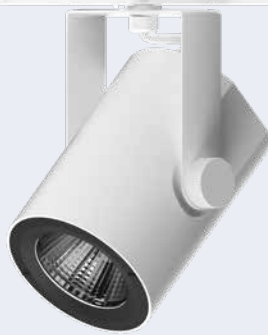
Ø115

From 22W to 57W

**Lens  
optical system**  
NSP (9°)  
SP (17°)  
FL (26°)  
FL (36°)

**Reflector  
optical system**  
SP (14°)  
FL (25°)  
MWFL (45°)

**Zoom  
optical systems**  
Zoom Precision  
Zoom DBS  
Zoom Smart



Ray is available in two different sizes Ø75mm and Ø115mm with different optical systems: lenticular, reflector or zoom to meet even the most demanding lighting requirements with precision, both in the retail and museum environments.

Ø75

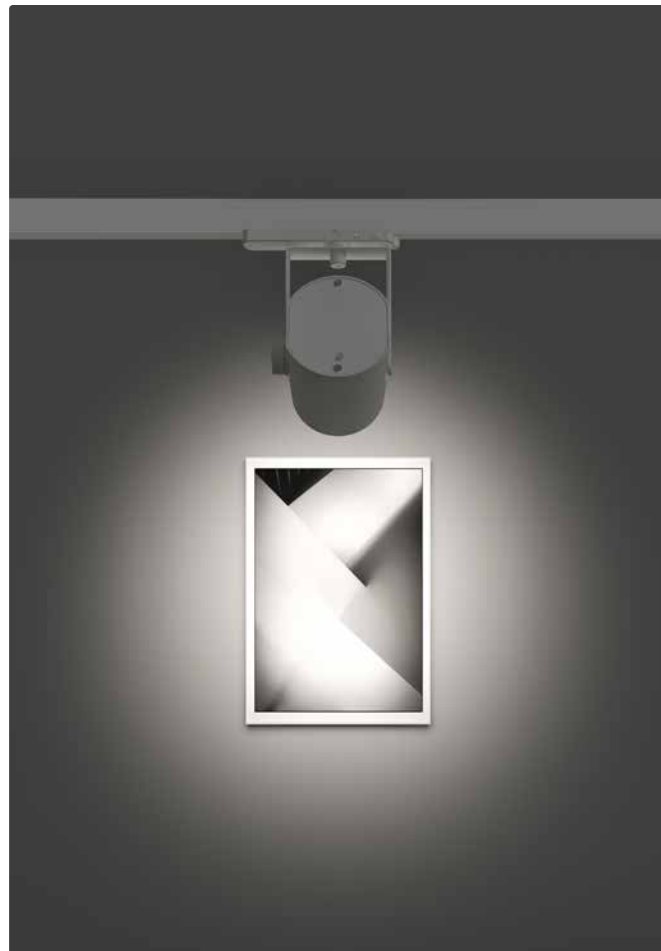
From 11W to 25W

**Lens  
optical system**  
NSP (10°)  
SP (19°)  
FL (24°)  
FL (31°)

**Reflector  
optical system**  
SP (17°)  
FL (31°)  
MWFL (48°)

**Zoom  
optical systems**  
Zoom Precision  
Zoom DBS  
Zoom Smart





Lens optical system



Reflector optical system

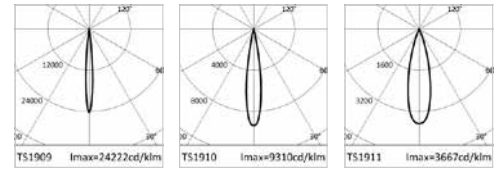
## Interchangeable lenses and reflectors

Differentiated beam openings are available in both lenticular versions for clean and precise beams, as well as in reflector versions, for lighting effects with softer gradient tones. Both versions provide the possibility to interchange the optics (accessories) to vary the beam opening.



**RAY 115**  
Up to 94lm/W  
From 1605lm to 2573lm  
3000K - 4000K  
Ra90

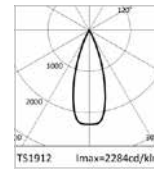
**LENS**



NSP 9°

SP 17°

FL 26°

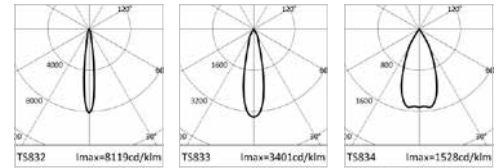


FL 36°



**RAY 115**  
Up to 107lm/W  
From 4018lm to 5371lm  
3000K - 4000K  
Ra90

**REFLECTOR**



SP 14°

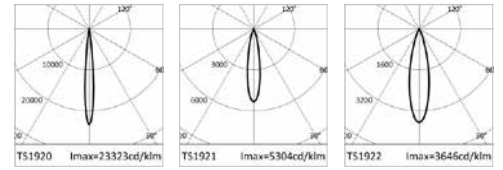
FL 25°

MWFL 45°



**RAY 75**  
Up to 106lm/W  
From 841lm to 1765lm  
3000K - 4000K  
Ra90

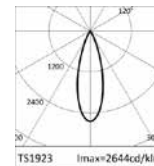
**LENS**



NSP 10°

SP 19°

FL 24°

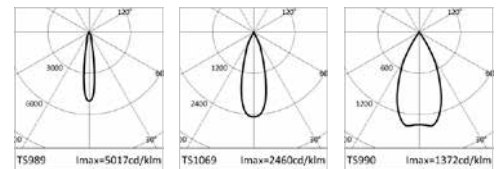


FL 31°



**RAY 75**  
Up to 95lm/W  
From 2017lm to 2168lm  
3000K - 4000K  
Ra90

**REFLECTOR**



SP 17°

FL 31°

MWFL 48°



Casambi

Ø 115  
18° - 53°  
25W  
max 1740lm

Ø 75  
17° - 40°  
11W  
max 599lm



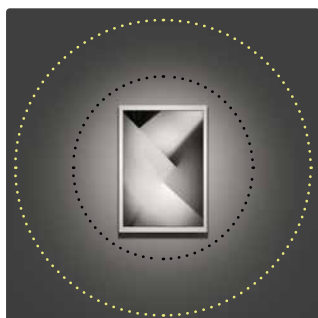
Ø 115  
11° - 31°  
29W  
max 1187lm

Ø 75  
9° - 64°  
20W  
max 1253lm



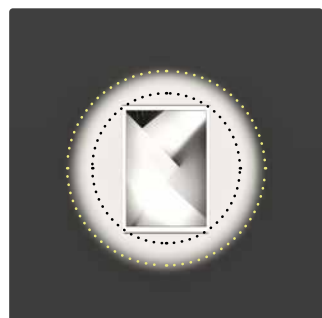
#### ZOOM DBS Dynamic

The Zoom DBS Dynamic versions make it possible to digitally adjust the beam opening angle using DBS (Dynamic Beam Shaper) technology with the Casambi app. Varying the scenography of a project has never been easier.



#### ZOOM Precision

The most precise and sophisticated in the range, the Ray Zoom has an optical system with the objective at a variable distance from the source with manual control that makes it possible to obtain extremely clear and defined beams.



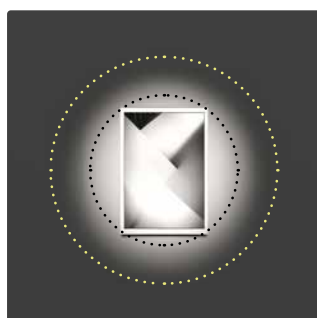
Ray is also available with Zoom optical systems with variable beam openings each of which is designed for particular lighting needs, extremely narrow and defined beams or wide, soft beams.

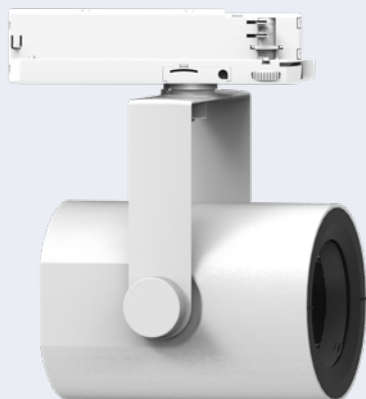




#### **ZOOM Smart**

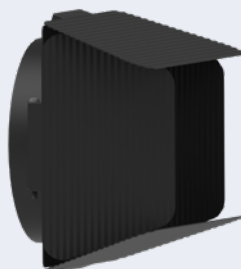
A manual zoom optic composed of two elements operating together which makes it possible to vary the beam opening by rotation. The optical system is housed entirely inside the projector body and guarantees excellent performance and precise beams.





#### **Barn door flaps**

Make it possible to control the beam according to specific needs: Especially suitable to change the shape of the light directly on the fixture.



#### **Asymmetrical screen**

Makes it possible to shield a part of the light to obtain an asymmetrical effect in the Flood versions.



#### **Snoot**

Makes it possible to shield the light by removing the «spurious» part



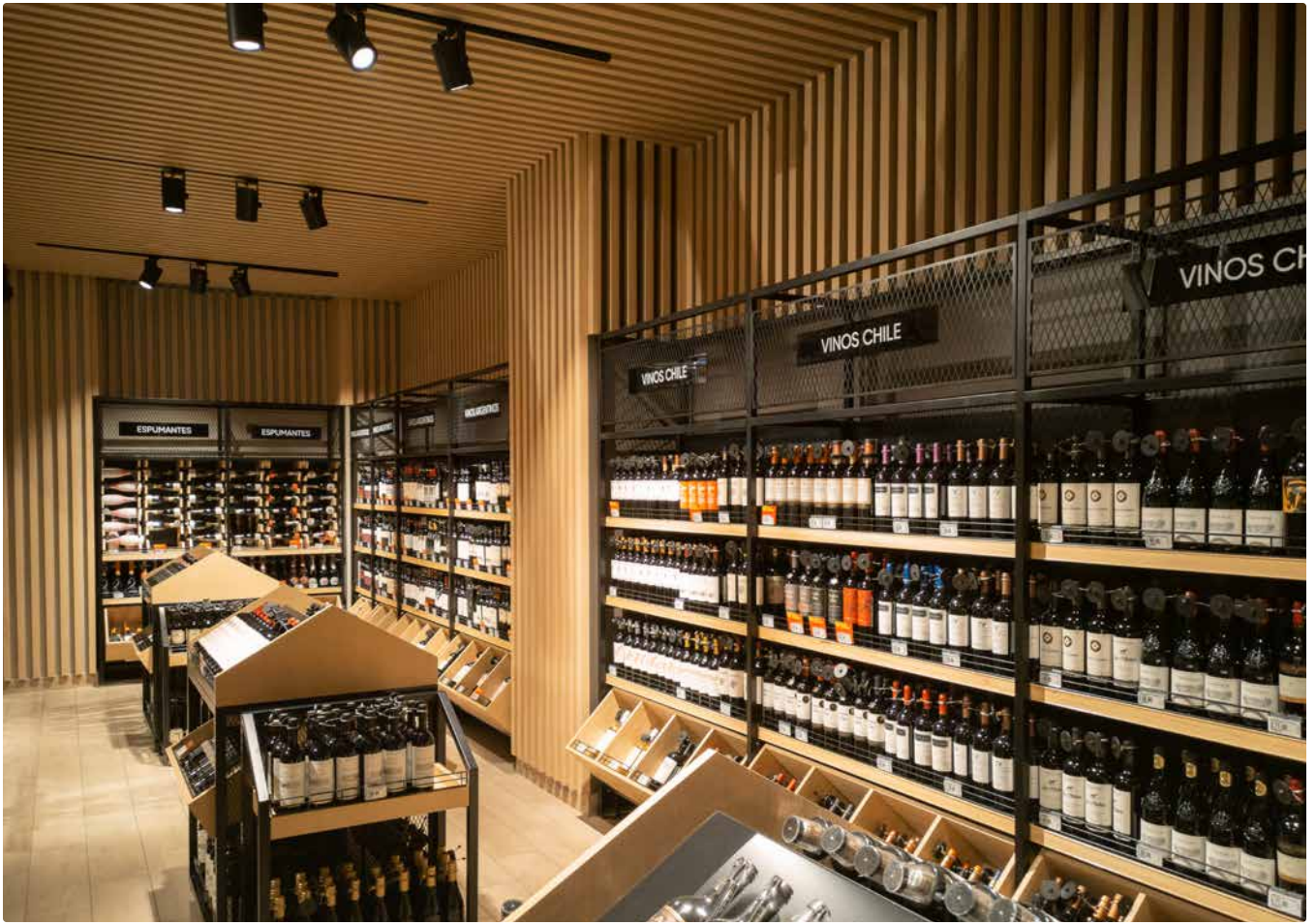
#### **Oval Lens**

Available for lenticular versions with Narrow Spot, Spot and Flood beam openings. The size of the oval beam depends on the initial beam opening; the narrower it is the more accentuated the effect.



## **Optical accessories**

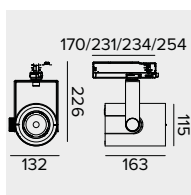
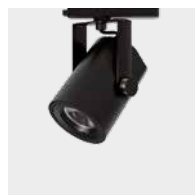
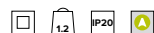
The Ray range includes optical accessories to control luminous flux. This makes it possible to shape and customise the light beam according to specific needs.





## RAY 115 LENS

220-240Vac | Ra90 | Fixture flux 3000K from 1605lm to 2573lm

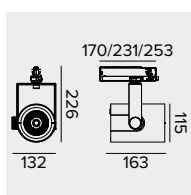
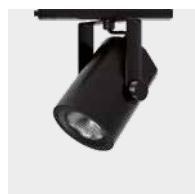
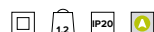


Product	Optic	Ra+K		Driver		Colour
T032	<b>NSL</b> NSP 9° - 22W	<b>930</b>	Ra90 3000K	<b>EL</b>	ON-OFF	<b>PW</b> ○
	<b>SPL</b> SP 17° - 30W	<b>940</b>	Ra90 4000K	<b>DA</b>	DALI	<b>DB</b> ●
	<b>MFL</b> FL 26° - 30W			<b>CA</b>	CASAMBI	
	<b>FLL</b> FL 36° - 30W					

**Note** Accessory codes on page 14.

## RAY 115 REFLECTOR

220-240Vac | Ra90 | Fixture flux 3000K from 4018lm to 4142lm

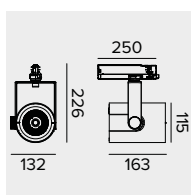
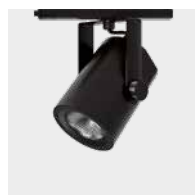
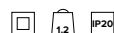


Product	Optic	Ra+K		Driver		Colour
T032	<b>SPR</b> SP 14° - 41W	<b>930</b>	Ra90 3000K	<b>EL</b>	ON-OFF	<b>PW</b> ○
	<b>MFR</b> FL 25° - 41W	<b>940</b>	Ra90 4000K	<b>DA</b>	DALI	<b>DB</b> ●
	<b>MWR</b> MWFL 45° - 41W			<b>CA</b>	CASAMBI	

**Note** Accessory codes on page 14.

## RAY 115 REFLECTOR HO

220-240Vac | Ra90 | Fixture flux 3000K from 5210lm to 5371lm

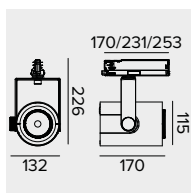
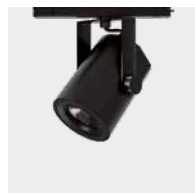
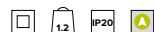


Product	Optic	Ra+K		Driver		Colour
T033	<b>SPR</b> SP 14° - 57W	<b>930</b>	Ra90 3000K	<b>EL</b>	ON-OFF	<b>PW</b> ○
	<b>MFR</b> FL 25° - 57W	<b>940</b>	Ra90 4000K			<b>DB</b> ●
	<b>MWR</b> MWFL 45° - 57W					

**Note** Accessory codes on page 14.

## RAY 115 ZOOM SMART


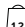
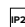

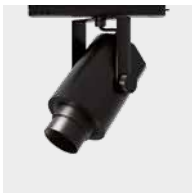
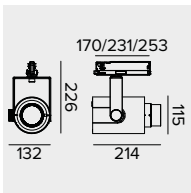


220-240Vac | Ra90 | Fixture flux 3000K from 2102lm to 2170lm




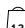
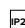

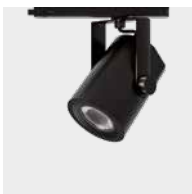
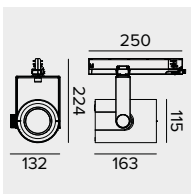
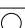

Product	Optic	Ra+K		Driver		Colour
T034	<b>ZMS</b> SP-MWFL 16°/43° - 30W	<b>930</b>	Ra90 3000K	<b>EL</b>	ON-OFF	<b>PW</b> ○
		<b>940</b>	Ra90 4000K	<b>DA</b>	DALI	<b>DB</b> ●
				<b>CA</b>	CASAMBI	





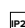

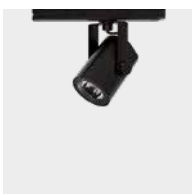
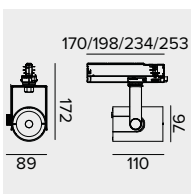
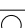

**RAY 115 ZOOM PRECISION**  
 220-240Vac | Ra90 | Fixture flux 3000K from 525lm to 1187lm

	Product	Optic	Ra+K		Driver		Colour	
<div> <div>     </div> <div>   </div> </div>	T034	<b>ZMP</b> SP-FL 11°/31° - 29W	<b>930</b>	Ra90 3000K	<b>EL</b>	ON-OFF	<b>PW</b>	
			<b>940</b>	Ra90 4000K	<b>DA</b>	DALI	<b>DB</b>	
					<b>CA</b>	CASAMBI		

**RAY 115 ZOOM DBS**  
 220-240Vac | Ra90 | Fixture flux 3000K from 1619lm to 1740lm


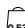


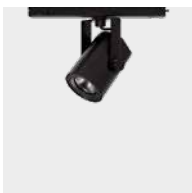
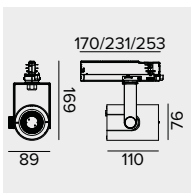
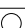

	Product	Optic	Ra+K		Driver		Colour	
<div> <div>     </div> <div>   </div> </div>	T034	<b>DBS</b> SP-WFL 18°/53° - 25W	<b>930</b>	Ra90 3000K	<b>CA</b>	CASAMBI	<b>PW</b>	
			<b>940</b>	Ra90 4000K			<b>DB</b>	

**RAY 75 LENS**  
 220-240Vac | Ra90 | Fixture flux 3000K from 841lm to 1765lm

	Product	Optic	Ra+K		Driver		Colour	
<div> <div>     </div> <div>   </div> </div>	T035	<b>NSL</b> NSP 10° - 11W	<b>930</b>	Ra90 3000K	<b>EL</b>	ON-OFF	<b>PW</b>	
		<b>SPL</b> SP 19° - 18W	<b>940</b>	Ra90 4000K	<b>DA</b>	DALI	<b>DB</b>	
		<b>MFL</b> FL 24° - 18W			<b>CA</b>	CASAMBI		
		<b>FLL</b> FL 31° - 18W						

**Note** Accessory codes on page 15.

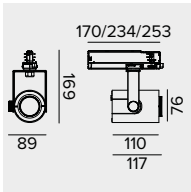
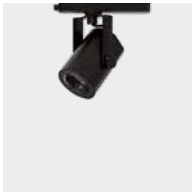
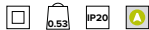
**RAY 75 REFLECTOR**  
 220-240Vac | Ra90 | Fixture flux 3000K from 2017lm to 2168lm

	Product	Optic	Ra+K		Driver		Colour	
<div> <div>     </div> <div>   </div> </div>	T035	<b>SPR</b> SP 17° - 25W	<b>930</b>	Ra90 3000K	<b>EL</b>	ON-OFF	<b>PW</b>	
		<b>FLR</b> FL 31° - 25W	<b>940</b>	Ra90 4000K	<b>DA</b>	DALI	<b>DB</b>	
		<b>MWR</b> MWFL 48° - 25W			<b>CA</b>	CASAMBI		

**Note** Accessory codes on page 15.

RAY 75 ZOOM SMART

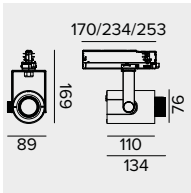
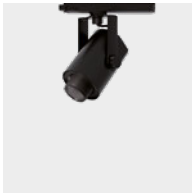
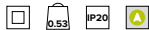
220-240Vac | Ra90 | Fixture flux 3000K from 1206lm to 1266lm



Product	Optic	Ra+K		Driver		Colour	
T036	ZMS SP-MWFL 17°/50° - 20W	930	Ra90 3000K	EL	ON-OFF	PW	○
		940	Ra90 4000K	DA	DALI	DB	●
				CA	CASAMBI		

RAY 75 ZOOM PRECISION

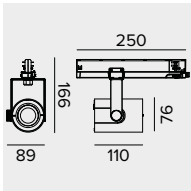
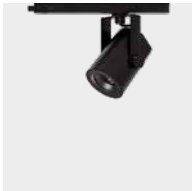
220-240Vac | Ra90 | Fixture flux 3000K from 404lm to 1253lm



Product	Optic	Ra+K		Driver		Colour	
T036	ZMP NSP-WFL 9°/64° - 20W	930	Ra90 3000K	EL	ON-OFF	PW	○
		940	Ra90 4000K	DA	DALI	DB	●
				CA	CASAMBI		

RAY 75 ZOOM DBS

220-240Vac | Ra90 | Fixture flux 3000K from 554lm to 599lm



Product	Optic	Ra+K		Driver		Colour	
T036	DBS SP-FL 17°/40° - 11W	930	Ra90 3000K	CA	CASAMBI	PW	○
		940	Ra90 4000K			DB	●

Accessory codes

RAY 115

Holder Ring



Code
1T3727

Transparent polycarbonate accessory holder ring.

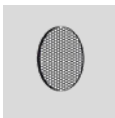
Screen



Ø mm	Code
80	1T3143

Black painted anodized diffusive aluminium asymmetric screen. Complete with blade light filter. Ideal for a Wall Washer effect. To be combined with spot and flood optics. To be completed with a dedicated holder ring 1T3727. For RAY 115 versions with lens.

Grid



Ø mm	Code
70	1T1711

Anti-glare louver. Black painted metal honeycomb structure. To be completed with a dedicated holder ring 1T3727. For RAY 115 versions with lens.

Filter



Ø mm	Code
70	1T1708


Flat striped glass blade light refractive filter. This makes the beam take on an oval shape and when combined with spotlights, the light blade appears more prominent. To be completed with a dedicated holder ring 1T3727. For RAY 115 versions with lens.

## Accessory codes

### RAY 115

## Accessory codes


### Cut-off


	Ø mm	Code
	80	1T3142
Cut-off Tube. Allows for the beam to be focused while removing the fall-off component.		

### Ray Shade

	Ø mm	Code
	118	A025
Adjustable barn doors flaps made of black painted steel.		

## Optic


	Ø mm	Optic	Code
	80	SP 14°	A057SPR
	80	FL 25°	A057MFR
	80	MWFL 45°	A057MWR
Interchangeable anodised reflective aluminium reflectors for Ray 115. Available in Spot, Flood and Medium Wide Flood beams.			

	Ø mm	Optic	Code
	70	SP 17°	A057SPL
	70	FL 26°	A057MFL
	70	FL 36°	A057FLL
Interchangeable optical grade PMMA lenses for Ray 115. Available in Spot and Flood beams. The accessory is not compatible with RAY 115 NSL versions.			


## Accessory codes

### RAY 75


### Screen

	Ø mm	Code
	50	1T4325
Black painted anodized diffusive aluminium asymmetric screen. Complete with blade light filter. Ideal for a Wall Washer effect. To be combined with spot and flood optics. For RAY 75 versions with lens.		


### Grid


	Ø mm	Code
	50	1T4322
Anti-glare louver. Black painted metal honeycomb structure. Complete with holographic diffusion filter. For RAY 75 versions with lens.		

## Filter


	Ø mm	Code
	50	1T4721
PMMA holographic filter with blade effect to ovalize the light beam; more evident when combined with spot and flood optics. For RAY 75 versions with lens.		

## Optic

	Ø mm	Optic	Code
	52	SP 17°	A056SPR
	52	FL 31°	A056FLR
	52	MWFL 48°	A056MWR
Interchangeable anodised reflective aluminium reflectors for Ray 75. Available in Spot, Flood and Medium Wide Flood beams.			

	Ø mm	Optic	Code
	50	SP 19°	A056SPL
	50	FL 24°	A056MFL
	50	FL 31°	A056FLL
Interchangeable optical grade PMMA lenses for Ray 75. Available in Spot and Flood beams. The accessory is not compatible with RAY 75 NSL versions.			

## Bracket

	Colour	Code
	○	A058PW
	●	A058DB
Rigid support bracket for projectors with Eurostandard Plus track attachment. For compatibility and use please refer to the assembly instructions for the projectors. For installation of Ray 75 projectors on wall vertical tracks.		



**TARGETTI SANKEY Srl**  
Certificated ISO 9001 n° 9130. TAR1  
Certificated ISO 14001 n° IT319206

The Enec mark, ISO9001 and ISO14001 certifications and the CE marking all guarantee that the activities carried out internally in the company are governed and controlled by procedures which assure constant level of quality.

Accredited laboratory in accordance with ISO 17025.

#### **Requisites and information**

All fixtures of the Targetti collection have been designed and produced to comply with European Standard EN60598-1 relative to the safety requisite of light fixtures.



All fixtures comply with the following directives:

- EMC Directive 2014/30/EU
- LV Directive 2014/35/EU
- RoHS Directive 2011/65/EU

#### **Unless specified otherwise**

- all fixtures are supplied without lamps;
- all fixtures are sold separately;
- all measurements are expressed in millimeters;
- all fixtures at low voltage are supplied without transformer;
- For products in Class III performance is only guaranteed using the electronic power supplies and drivers indicated in the catalogue.



Targetti offers a five years warranty on the products that use LED light sources included in the Catalogues (unless otherwise specified).

The extension of guarantee does not apply to products with traditional light bulbs, to all the products for light management and control systems, both by Targetti and those by third parties, or to Targetti products fitted with 230V LED modules. For products fitted with traditional bulbs / LED bulbs, the warranty extension is valid only for the lighting product. The five years warranty is valid from the invoice date and covers any manufacturing and/or material defect found in products, if they are used in accordance with their intended use. The warranty terms are available on the Extension of guarantee.

#### **Consorzio ecolight**


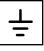



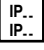


Targetti Sankey Srl is a member of the Ecolight consortium that was set up in 2004 (D.Lgs. 49/2014) to comply with the provisions of the European Directive that was adopted in Italy as the European Directive 2012/19/EU for WEEE on managing, recovering and treating waste electrical and electronic equipment, used batteries and accumulators in compliance with all applicable legislation.

The colors of the products illustrated are reproduced as faithfully as possible compatibly with the technical limitations of the printed medium.










The company reserves the right to make changes to the production without notice. Reproduction of this catalogue or any part of it is prohibited. The products illustrated in this catalogue are covered by one or more Italian or international patents. The company will take legal action against any imitators.



## Icons legend

	Class I luminaire in which the protection against electrical shock is guaranteed by the connections of the conductive elements accessible to a protective conductor (earth connection).
	Luminaire in which the connection to a protective conductor (earth connection) guarantees the immunity to radio noises.
	Class II luminaire (double insulation), protected against the accidental contact with parts under tension from the user.
	Class III luminaire, suitable for connection to very low voltage circuits.
	Solid particle and liquid ingress protection degree.
	Protection degree - Recessed part . Protection degree - Exposed part.
	Impact protection degree.
	ENEC European Norms Electrical Certification.

## Particular symbols

	Weight of the single fixture
	Cable length
	Walk-over
	Driver-over safe
	Fixtures that have parameters below the minimum visibility threshold $PstLM \leq 1$ and $SVM \leq 0.4$ (IEC TR 61547-1 and IEC TR 63158).
	Casambi with accessories
	Casambi ready
	DMX on board
	DBS (Dynamic Beam Shaping) optic system

## Light beam apertures

Optics	Optic description	from	to
NSP	Narrow Spot	5°	10°
SP	Spot	11°	21°
FL	Flood	22°	40°
MWFL	Medium Wide Flood	41°	50°
WFL	Wide Flood	51°	70°
VWFL	Very Wide Flood	71°	120°
WW	Wall Washer		
ASY	Asymmetric		
FW	Floor Washer		
ELL	Elliptical		
ELT	Elliptical Transversal		
AMB	Ambient		
OPL	Opal		
GRZ	Grazing		
UGR	UGR		
ZOOM	Zoom		
DBS	Dynamic Beam Shaping		

### Note

- Please contact us for on demand treatments and versions.
- The performances reported on the products refer to the use of the recommended drivers.
- The drivers selected by Targetti make the fixtures "Safe Flicker".

